



# Poultry Compost

Dried pollen

|   |   |   |    |      |
|---|---|---|----|------|
| N | P | K | C  | U.F. |
| 4 | 3 | 2 | 40 | 52   |

**Biological**

## GUARANTEED POULTRY MANURE

**Poultry Compost** derives exclusively from well-composted and well-dried avian dejections. The composting system used guarantees an odourless finished product, well humified and without ammonia, either as such or with the addition of water with a balanced pH.

| COMPOSITION                   |                                  |                   |      |
|-------------------------------|----------------------------------|-------------------|------|
| Nitrogen                      | (N)                              | organic           | 4 %  |
| Phosphoric anhydride          | (P <sub>2</sub> O <sub>5</sub> ) | total             | 3 %  |
| Potassium oxide               | (K <sub>2</sub> O)               | soluble in water  | 2 %  |
| Calcium oxide                 | (CaO)                            | total             | 2 %  |
| Magnesium oxide               | (Mgo)                            | soluble in water  | 1 %  |
| Carbon                        | (C)                              | biological origin | 40 % |
| Organic substance             |                                  |                   | 69 % |
| Relationship C/N              |                                  |                   | 13   |
| Reaction (1:5) pH             |                                  |                   | 7    |
| Humus                         |                                  | total             | 12 % |
| Umic Acids (on total Humus)   |                                  |                   | 30 % |
| Fulvic Acids (on total Humus) |                                  |                   | 40 % |

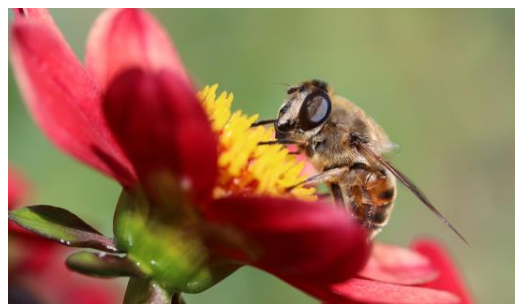


# Poultry Compost



## PACKAGING

|          |                      |
|----------|----------------------|
| Bags     | Kg. 25 (n°60/pallet) |
| Big Bags | Kg. 500/each         |
| Form     | Pellets              |



## RAW MATERIALS

|   |                           |
|---|---------------------------|
| Product obtained only from begginging FERTILIZERS of D.lgs. 75/2010, Attached 13, Table 1 | <b>ORGANIC COMPONENTS</b> |
|   | Manure and pollen dried   |

Restrictions on the use - Art. 11, paragraph 1, letter c) of the Reg.CE/1069/2009: The feeding of farmed animals with herbage, assumed through the pasture or administered after having been picked up, coming from farmland where organic fertilizers or soil improvers different from dung have been applied, unless the pasture or the cut of grass takes after a waiting period - at least 21 days, facing to guarantee a suitable risk assessment for the public and animal health.



The suitable analytical data on the wrappings follow the prescriptions of the D.L.gs n. 75 of 29/04/2010 and following changes and /or integrations. All the data provided in the present publication are indicative, BIOS s.r.l. the right reserves its rights to modify them without obligation of warning.

## RECOMMENDED DOSES - Kg./Ha

|                                  |               |
|----------------------------------|---------------|
| Tree crops                       | 1.000 - 1.500 |
| Horticultural crops (open field) | 800 - 1.200   |
| Greenhouses                      | 1500 - 2.500  |

The recommended doses have indicative value and should be increased or decreased considering the follow: the pedoclimatic characteristic of the zone of interest, fertility, water retention, structure of soil, cultural variety, the equipment in use and finally the experience of the agricultural entrepreneur. In any case it is recommended to avoid concentrations of the product next to the seed and/or to the roots.

ORGANIC FERTILIZERS NP